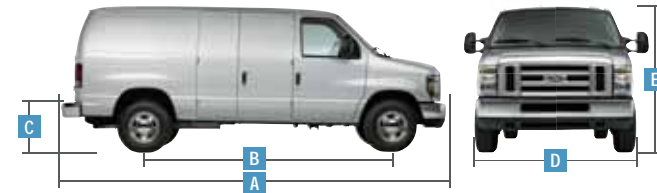




E-SERIES DIMENSIONS & CAPABILITIES

EXTERIOR	E-150 REGULAR LENGTH	E-150 EXTENDED LENGTH	E-250/E-350 SUPER DUTY® REG. LENGTH	E-250/E-350 SUPER DUTY EXT. LENGTH
A. Overall length	216.7"	236.4"	216.7"	236.4" (Van) 236.7" (Wagon)
B. Wheelbase	138.0"	138.0"	138.0"	138.0"
C. Loadfloor height	28.0" (Van) 28.8" (Wagon)	28.6"	31.1"/29.5" (Van) 30.2" (Wagon)	31.5"/29.7" (Van) 29.1" (Wagon)
D. Overall width (excluding mirrors) Overall width (including mirrors)	79.4" 106.0" (Van) 95.7" (Wagon)	79.4" 106.0"	79.4" 106.0" (Van) 95.7" (Wagon)	79.4" 106.0" (Van) 95.7" (Wagon)
E. Height	82.4" (Van) 82.1" (Wagon)	82.6"	84.8"/83.7" (Van) 83.1" (Wagon)	85.0"/83.6" (Van) 82.3" (Wagon)
Rear cargo door opening height	49.5" (Van) 46.8" (Wagon)	49.5"	49.5" (Van) 46.8" (Wagon)	49.5" (Van) 48.0" (Wagon)
Rear cargo door opening width	53.9" (Van) 54.4" (Wagon)	53.9"	53.9" (Van) 54.4" (Wagon)	53.9" (Van) 54.4" (Wagon)
Side cargo door opening height	48.2" (Van) 47.2" (Wagon)	48.1"	48.2" (Van) 47.2" (Wagon)	48.1" (Van) 47.2" (Wagon)
Swing-out side cargo door opening width	44.8"	44.8"	44.8"	44.8"
Sliding side cargo door opening width	45.6"	45.6"	45.6"	45.6"
INTERIOR				
1st Row				
Head room	42.0"	42.0"	42.0"	42.0"
Shoulder room	68.1"	68.1"	68.1"	68.1"
Hip room	65.6"	65.6"	65.6"	65.6"
Leg room	40.0"	40.0"	40.0"	40.0"
2nd Row (Wagon)				
Head room	40.2"	—	40.2"	40.2"
Shoulder room	71.7"	—	71.7"	72.8"
Hip room	66.5"	—	66.5"	68.6"
Leg room	38.8"	—	38.8"	38.8"
3rd Row (Wagon)				
Head room	40.1"	—	40.1"	40.1"
Shoulder room	71.7"	—	71.7"	71.7"
Hip room	66.8"	—	66.8"	66.8"
Leg room	40.0"	—	40.0"	40.0"
4th Row (Wagon)				
Head room	—	—	38.9"	39.6"
Shoulder room	—	—	69.4"	69.4"
Hip room	—	—	66.1"	66.1"
Leg room	—	—	39.4"	39.4"
5th Row (Wagon)				
Head room	—	—	—	37.4"
Shoulder room	—	—	—	67.5"
Hip room	—	—	—	65.8"
Leg room	—	—	—	37.0"
Van Only				
Maximum cargo volume (cu. ft.) behind 1st row	237.8	278.3	237.8	278.3



ENGINE RATINGS

	4.6L SOHC V8 FFV	5.4L SOHC V8 FFV	6.8L SOHC V10	6.0L POWER STROKE® V8 TURBO DIESEL
Horsepower (hp @ rpm)	225 @ 4800	255 @ 4500	305 @ 4250	235 @ 3150
Torque (lb.-ft. @ rpm)	286 @ 3500	350 @ 2500	420 @ 3250	440 @ 1600

MAXIMUM LOADED TRAILER WEIGHT¹ (lbs.)

AUTOMATIC TRANSMISSION

WAGON

Engine	Axle Ratio	GCWR (lbs.)	E-150	E-350 SUPER DUTY	E-350 SUPER DUTY EXTENDED
4.6L SOHC V8 FFV	3.73	11,500	5600	—	—
	4.10	12,000	6100	—	—
5.4L SOHC V8 FFV	3.73	13,000	7000	6700	6500
	4.10	13,000	7000	6700	6500
6.8L SOHC V10	3.73	15,000	—	8500	8300
	4.10	18,500	—	10,000	10,000

VAN²

Engine	Axle Ratio	GCWR (lbs.)	E-150	E-150 EXTENDED	E-250	E-250 EXTENDED	E-350 SUPER DUTY	E-350 SUPER DUTY EXTENDED
4.6L SOHC V8 FFV	3.73	11,500	6000	5900	6000	5900	—	—
	4.10	12,000	6500	6400	6500	6400	—	—
5.4L SOHC V8 FFV	3.73	13,000	7400	7300	7400	7300	7300	7200
	4.10	13,000	7400	7300	7400	7300	7300	7200
6.8L SOHC V10	3.73	15,000	—	—	—	—	9100	9000
	4.10	18,500	—	—	—	—	10,000	10,000
6.0L V8 Diesel	3.55	16,000	—	—	—	—	9600	9500
	4.10	20,000	—	—	—	—	10,000	10,000

CUTAWAY

Engine	Axle Ratio	GCWR (lbs.)	E-250 SRW	E-350 SRW	E-350 DRW	E-450 DRW
4.6L SOHC V8 FFV	4.10	12,000	7500	—	—	—
5.4L SOHC V8 FFV	3.73	9600	—	4700	—	—
		10,050	—	—	4900	—
	4.10	10,600	—	5700 ³	—	—
		13,000	—	8000 ³	7700	—
6.8L SOHC V10	4.56	14,050	—	—	—	8500
	4.10	18,500	—	10,000	10,000	—
		4.56	20,000	—	—	—
6.0L V8 Diesel	4.10	20,000	—	10,000	10,000	10,000

¹Maximum capabilities shown are for properly equipped vehicles with required equipment and a 150-lb. driver. Weight of additional options, equipment, passengers and cargo must be deducted from this weight. Cutaway ratings are based on incomplete vehicles. Final vehicle manufacturer weights and ratings will vary due to upfit and modification requirements. ²For maximum trailer weights with Crew Van, deduct 200 lbs. from the weights shown (except with 18,500 lbs. and 20,000 lbs. GCWR). ³E-350 SRW Cutaway with 5.4L V8 only (midship fuel tank) 10,600-lb. GCWR.

Specifications

E-SERIES VAN FEATURES & OPTIONS

E-150 COMMERCIAL		
E-250 COMMERCIAL		
E-350 SUPER DUTY® COMMERCIAL		
MECHANICAL		
● ● –	4.6L V8 FFV engine	
○ ○ ○	5.4L V8 FFV engine	
– – ○	6.8L V10 engine	
– – ○	6.0L Power Stroke® V8 Turbo Diesel engine (limited availability)	
● ● ●	4-speed automatic overdrive transmission	
– – ○	5-speed automatic TorqShift® transmission with overdrive and Tow/Haul Mode (req. 6.8L V10 engine)	
– – ○	5-speed automatic TorqShift transmission with overdrive (diesel engine only)	
○ ○ ○	AdvanceTrac® with RSC® (Roll Stability Control™) (gas engines only; n/a with limited-slip axle or aerial bucket suspension)	
○ ○ ○	Alternator – 155-amp (5.4L V8 and 6.8L V10 engines only)	
– – ○	Alternator – Dual-system 140-/120-amp (diesel engine only)	
– – ○	Alternator – 140-amp (diesel engine only)	
– – ○	Alternator – 225-amp (6.8L V10 engine only)	
○ ○ ●	Auxiliary fuel port ¹	
● ● ●	Auxiliary transmission fluid cooler	
○ ○ ○	Axle – Limited-slip ²	
○ ○ ○	Battery – Heavy-duty auxiliary 78-amp-hr (gas engines only; incl. with Ambulance Prep Package with 6.8L V10)	
○ ○ ○	CNG/LPG fuel-capable engine ² – Hardened intake valves, exhaust valves and valve seats (late availability; 5.4L V8 and 6.8L V10 engines only)	
○ ○ ○	Engine block heater ³	
– – ○	Front GAWR – Maximum up to 4600 lbs. ⁴ (Fleet only; incl. with Ambulance Prep Package and Aerial Bucket Cargo Van Suspension Package)	
○ ○ ○	Integrated Trailer Brake Controller ⁵ (req. Trailer Tow Package, message center, and AdvanceTrac with RSC on 4.6L V8 and 5.4L V8; n/a with diesel engine)	
– – ○	Power TakeOff (PTO) provision (diesel engine only)	
– – ○	Spare tire delete	
● ● –	Speed limitation – 65-mph governed top speed (4.6L V8; Fleet only)	
● ● –	Speed limitation – 75-mph governed top speed (4.6L V8; Fleet only)	
○ ○ ○	Traction Control (gas engines only; n/a with AdvanceTrac with RSC)	
SAFETY/SECURITY		
● ● ●	Airbags ⁶ – Driver and front-passenger front	
● ● ●	Daytime running lamps (Fleet only)	
● ● ●	E-Guard Cargo Protection System™ and side-door security system ²	
○ ○ ○	Passenger airbag cut-off switch (n/a with Crew Van Package or seats delete)	
● ● ●	Power 4-wheel disc brakes with Anti-lock Brake System (ABS)	
○ ○ ○	SecuriLock® passive anti-theft ignition system	
● ● ●	Tire Pressure Monitoring System (excludes spare)	
SEATING		
● ● ●	Dual vinyl front bucket seats	
○ ○ ○	Dual cloth front bucket seats	
○ ○ ○	Dual cloth front captain's chairs ⁷	
○ ○ ○	Power driver seat – 6-way (req. front captain's chairs)	
APPEARANCE/COMFORT/CONVENIENCE		
● ● ●	16" steel wheels with sport wheel covers	
○ ○ ○	16" forged-aluminum wheels (req. gas engine)	
○ ○ ○	16" White-painted steel wheels (deletes sport wheel covers; late availability)	
● ● ●	Air conditioning (front only)	
○ ○ ○	Air conditioning – High-capacity (front and rear)	
○ ○ ○	Air conditioning delete	
● ● ●	AM/FM stereo with digital clock and 2 speakers	
○ ○ ○	AM/FM stereo/single-CD player with MP3 capability, audio input jack, digital clock and 4 speakers (only 2 speakers with E-Guard)	

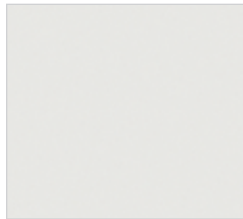
E-150 COMMERCIAL		
E-250 COMMERCIAL		
E-350 SUPER DUTY COMMERCIAL		
APPEARANCE/COMFORT/CONVENIENCE (continued)		
○ ○ ○	Premium Navigation Radio System featuring SIRIUS Travel Link™ – Single-CD player, MP3 capability, audio input jack and SIRIUS Satellite Radio with 6-month subscription (req. Power Group and Ford SYNC®)	
○ ○ ○	Ford SYNC (incl. auto-dimming rearview mirror; req. cruise control; n/a with base radio or in-dash computer)	
○ ○ ○	SIRIUS Satellite Radio with 6-month subscription (n/a with base radio or radio delete; incl. with SIRIUS Travel Link on Premium Navigation Radio System)	
○ ○ ○	Radio Prep Package – 2 speakers	
○ ○ ○	Radio Prep Package – 4 speakers (n/a with E-Guard)	
○ ○ ○	Radio delete	
● ● ●	Bumpers – Front and rear contour, Black-painted	
● ● ●	Bumpers – Front and rear contour, chrome	
● ● ●	Bumper – Rear step, Black (incl. Class I Trailer Tow Prep)	
● ● ●	Bumper – Rear step, chrome (incl. Class I Trailer Tow Prep)	
○ ○ ○	Cruise control (req. SYNC)	
● ● ●	Floor covering – Front vinyl	
● ● ●	Floor covering – Rear vinyl	
○ ○ ○	Instrument panel electronic message center with engine-hour meter (standard with diesel engine; req. with integrated Trailer Brake Controller)	
○ ○ ○	Power Group (door locks, windows, aero-style sideview mirrors, remote keyless-entry system)	
○ ○ ○	Rear View Camera (n/a with base radio or radio delete)	
○ ○ ○	Reverse Sensing System (req. rear step or contour bumpers and message center)	
○ ○ ○	Running boards – Door-length on driver side; full-length on passenger side	
○ ○ ○	Side cargo door – Sliding solid panel	
● ● ●	Side cargo doors – Swing-out 60/40 doors	
○ ○ ○	Sideview mirrors – Aero-style, manual-adjustable with manual convex spotters	
● ● ●	Sideview mirrors – Aero-style, power-adjustable with manual convex spotters ⁸	
● ● ●	Sideview mirrors – Manual telescoping trailer tow, manual-adjustable with manual convex spotters	
○ ○ ○	Sideview mirrors – Manual telescoping trailer tow, power-adjustable with manual convex spotters ⁹	
○ ○ ○	User-defined upfitter switches – 4 (n/a with 4.6L V8 engine; req. 155-amp or 225-amp alternator)	
○ ○ ○	Privacy glass ²	
○ ○ ○	Windows – Fixed rear cargo door glass	
○ ○ ○	Windows – Fixed side/fixed rear cargo door glass ²	
○ ○ ○	Windows – Swing-out side/fixed rear cargo door glass ²	
○ ○ ○	Windows – All around (incl. swing-out side/fixed rear cargo door glass)	
PACKAGES ²		
– – ○	Aerial Bucket Cargo Van Suspension Package – 4600 lbs. front GAWR, 7810 lbs. 9-leaf rear springs (SRW); rear GAWR reduced to 5400 lbs. with gas engines (n/a with AdvanceTrac with RSC)	
– – ○	Ambulance Prep Package – Auxiliary Heater/AC Connector Package, auxiliary fuel port, 4-10-1 limited-slip rear axle (diesel), 3.73:1 rear axle (6.8L V10), dual alternators (diesel), 225-amp alternator (6.8L V10), heavy-duty 78-amp-hr battery (6.8L V10), dual 78-amp-hr batteries, floor pan extended side and rear, fixed side/rear door tinted glass, front vinyl headliner with HIC extension, maximum front GAWR, modified vehicle wiring kit and vinyl sun visors (diesel and 6.8L V10 engines only)	
○ ○ ○	Commercial Van Package – Power Group (door locks, windows, aero-style sideview mirrors, remote keyless-entry system), rear step bumper, fixed rear cargo door glass, and cruise control	
● ● ●	Handling Package – Front stabilizer bar, and heavy-duty front and rear shock absorbers	

E-150 COMMERCIAL		
E-250 COMMERCIAL		
E-350 SUPER DUTY COMMERCIAL		
PACKAGES ² (continued)		
○ ○ ○	Crew Van Package – 2nd-row vinyl bench seat, metal-mesh bulkhead, partial headliner, full B-pillar trim panels, low-series polypropylene side door and rear door-trim panels, LH lower trim panel behind driver seat, restraints with metal retractor cover for 2nd-row bench seat, pull handle on 40% side door and RH back door, and front and rear vinyl floor covering	
○ ○ ○	Dome/Cargo Light Kit – 3 additional cargo lights ²	
○ ○ ○	No-Charge EconoCargo™ Cargo Management System – Insulated polyethylene panels covering walls and ceiling, includes bulkhead with lockable door, 2 tracks and tie-down straps ¹⁰	
○ ○ ○	EconoCargo Upgrade Package (General Delivery; req. EconoCargo System) – 2 wire shelving modules (48"H x 16"D x 49"W), 2 single uprights (48"), 1 double upright (48"), 6 wire shelves (16" x 48") and 2 wire shelves (12" x 48")	
○ ○ ○	Mid-Series Exterior Upgrade Package – Aerodynamic headlamps, chrome grille and black-painted front and rear contour bumpers	
○ ○ ○	High-Series Exterior Upgrade Package – Front and rear contour chrome bumpers, chrome grille surround, and aerodynamic headlamps	
○ ○ ○	Insulation Package – Full-length cloth headliner, cloth sun visors, upper B-pillar trim panels, polypropylene side door and rear door-trim panels	
○ ○ ○	Interior Upgrade Package – Full-length carpeting, side/rear cargo door-trim panels, dash sound absorber, full-length cloth headliner, cloth sun visors, full B-pillar trim, dual cloth front captain's chairs, front carpeted floor mats, Insulation Package and Power Group	
○ ○ ○	Premium Van Group – Dual front captain's chairs, AM/FM stereo/single-CD player with digital clock and 4 speakers, Exterior Upgrade Package, Power Group, cruise control and Insulation Package	
○ ○ ○	Modified Wiring Kit – Underhood powertrain circuit tap-ins including Power TakeOff (PTO) functions and vehicle speed output, and modified vehicle connections for customized wiring harness provisions	
○ ○ ○	No-Charge Masterack® Racks and Bins Package – Fully installed steel shelving, drawers and cabinets (incl. bulkhead with lockable door) ¹⁰	
○ ○ ○	No-Charge QuietFlex® III Composite Racks and Bins Package – Enclosed lockable bin, lockable wheel-well door, 2 deep drawers, 4 shallow drawers, 2 triple hooks, 10 shelf dividers and composite bulkhead with lockable door ¹⁰	
○ ○ ○	Racks and Bins Upgrade Package 1 (General Contractor; requires Racks and Bins Package) – Ship-thru ladder rack, ladder-rack crossbar	
○ ○ ○	Racks and Bins Upgrade Package 2 (Electrical Contractor/Appliance Repair; requires Racks and Bins Package) – 12-drawer cabinet, ¹¹ tilt shelf, ¹¹ toolbox door (additional), wire spool rack, triple hooks (additional) and shelf divider set (additional)	
○ ○ ○	Racks and Bins Upgrade Package 3 (Plumbing/HVAC Service; req. Racks and Bins Package) – 12-drawer cabinet, ¹¹ tilt shelf ¹¹ and tank rack (3-tank capacity)	
● ● ●	Trailer Tow Prep Package – Class I – Trailer wiring harness	
○ ○ ○	Trailer Tow Package – Class II/III/IV – Trailer wiring harness (blade-style female connector), electric brake controller tap-in capability, relay system for backup/B+ running lights, and frame-mounted hitch receiver	
FORD WORK SOLUTIONS™		
○ ○ ○	Crew Chief™ vehicle tracking system (n/a with in-dash computer)	
○ ○ ○	In-dash computer featuring Windows® CE operating system with touch screen (n/a with SYNC, SIRIUS Satellite Radio or Crew Chief)	
○ ○ ○	Tool Link™ tool tracking system (req. in-dash computer)	
FACTORY-INVOICED ACCESSORIES		
○ ○ ○	Power Code™ Remote Start System (req. Power Group)	

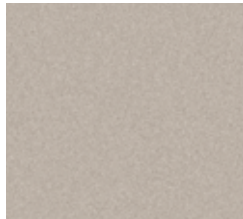
● Standard ● Select Availability ○ Optional — Not Available

¹Standard on diesel, optional on gas engines. ²Restrictions apply, see dealer for details. ³Included with diesel. ⁴Computer selected – 4600 lbs. max. ⁵TBC verified to be compatible with electrically actuated drum brakes only. ⁶Always wear your safety belt and secure children in the rear seat if equipped. ⁷Available as part of Interior Upgrade Package. ⁸Included as part of Power Group. ⁹Requires Power Group. ¹⁰Requires vinyl rear floor covering. ¹¹12-drawer cabinet and tilt shelf not included on QuietFlex III Package.

E-SERIES EXTERIOR & INTERIOR COLORS, FABRICS, TRIM & WHEELS



Oxford White



Pueblo Gold Metallic



School Bus Yellow



Royal Red Metallic



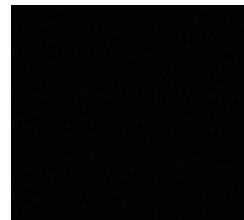
Dark Blue Pearl Metallic



Ingot Silver Metallic



Vermillion Red



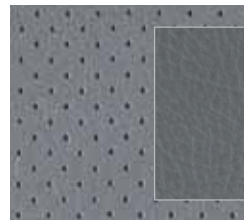
Black



Cloth — Medium Pebble
Standard on XLT Wagon, available on Van and Cutaway



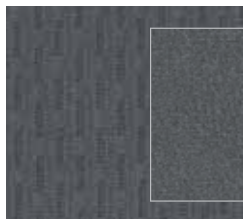
Leather — Medium Pebble
Included with XLT Premium Wagon



Vinyl — Medium Flint
Standard on XL Wagon, Van and Cutaway



Cloth — Medium Flint
Available on XL Wagon, Van and Cutaway



Cloth — Medium Flint
Standard on XLT Wagon, available on Van and Cutaway



Leather — Medium Flint
Included with XLT Premium Wagon



16" Sport Wheel Cover



16" Forged-Aluminum Wheel

Interior Colors

	●	●
XL/XLT Wagon		
Oxford White	●	●
Pueblo Gold Metallic ¹	●	●
School Bus Yellow (XL: Fleet only)		●
Royal Red Metallic ¹	●	●
Dark Blue Pearl Metallic ¹		●
Ingot Silver Metallic ¹		●
Vermillion Red	●	●
Black	●	●
XLT Premium Wagon		
Oxford White	●	●
Pueblo Gold Metallic ¹	●	
Royal Red Metallic ¹	●	●
Dark Blue Pearl Metallic ¹		●
Black	●	●
Van²		
Oxford White	●	●
Pueblo Gold Metallic ¹	●	●
School Bus Yellow (Fleet only)		●
Royal Red Metallic ¹	●	●
Dark Blue Pearl Metallic ¹		●
Ingot Silver Metallic ¹		●
Vermillion Red	●	●
Black	●	●
Cutaway³		
Oxford White	●	●
School Bus Yellow (Fleet only)	●	●
Royal Red Metallic ¹	●	●
Dark Blue Pearl Metallic ¹	●	●
Ingot Silver Metallic ¹	●	●
Vermillion Red	●	●
Black	●	●

INTERIORS: ● Medium Pebble ● Medium Flint

¹Additional cost. ²Medium Pebble requires Interior Upgrade Package or Premium Van Group on Commercial Van. ³Medium Pebble only available with Motorhome Prep Package on Cutaway.

Colors shown are representative only. Not all colors are available on all models. See your dealer for actual paint/trim options.

New Vehicle Limited Warranty. We want your Ford E-Series ownership experience to be the best it can be. So under this warranty, your new vehicle comes with 3-year/36,000-mile Bumper-to-Bumper Coverage, 5-year/60,000-mile Powertrain Warranty Coverage, 5-year/50,000-mile Safety Restraint Coverage, and 5-year/unlimited-mile Corrosion (Perforation) Coverage — all with no deductible. Please ask your Ford Dealer for a copy of this limited warranty.

Roadside Assistance. Covers your vehicle for 5 years or 60,000 miles, so you have the security of knowing that help may be only a phone call away should you run out of fuel, lock yourself out of the vehicle, or need towing. Your Ford Dealer can provide complete details on all of these advantages.

Ford Credit. Get the ride you want. Whether you plan to lease or finance, you'll find the choices that are right for you at Ford Credit. Ask your Ford Dealer for details or check us out at fordcredit.com.

Ford Extended Service Plan. For a purchase or lease, the Ford Extended Service Plan (ESP) gives you "Peace-of-Mind" protection designed to cover key vehicle components and protect you from the cost of unexpected repairs. Ask your dealer for a Ford ESP, the only service contract backed exclusively by Ford and honored at all Ford Lincoln Mercury dealerships.

Insurance Services. Get Ford Motor Company quality in your auto insurance. Our program offers industry-leading benefits and competitive rates. Call 1-877-367-3847, or visit us at fordvip.com for a no-obligation quote. Insurance offered by American Road Services Company (in CA, American Road Insurance Agency), a licensed agency and subsidiary of Ford Motor Company.